

# TABLETOP CONTROLLER

For Converge Pro and XAP Professional Conferencing Platforms

**ClearOne**

An intuitive, cost-effective tabletop controller for ClearOne's Converge™ Pro and XAP® platforms. It greatly simplifies control of an audio conference without the need for a touch-screen panel control system. User-definable keys offer simple control of basic audio and presentation functions.



AN INTUITIVE,  
AFFORDABLE  
CONTROLLER  
FOR CONVERGE  
PRO AND XAP

## APPLICATIONS

Conference Rooms  
Boardrooms  
Courtrooms  
Distance Learning Facilities  
Training Rooms

### Programmable Functions:

- + Presenter mic +/-
- + Lights on/off
- + Projector on/off
- + Screen up/down
- + DVD/CD/VCR volume +/-
- + Record call start/stop
- + Other audio & presentation functions

## ADVANTAGES

### Simple, Intuitive Operation

- + Dial pad resembles telephone keypad for instant familiarity
- + Users can start and run an audio conference call as easily as dialing a phone no training required
- + Uses actual buttons instead of touch panel screen, which is less intimidating to untrained users
- + Buttons are limited to essential audio conference, presentation, and room controls

### Affordability

- + Costs less than touch-screen panel control systems
- + Simplified setup for user-definable keys saves programming time and expense compared to touch-screen panel control systems
- + Combined with Converge Pro or XAP, delivers affordable professional audio conferencing system solution

### Room Control Flexibility

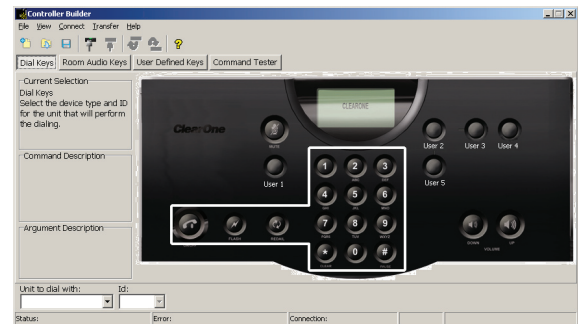
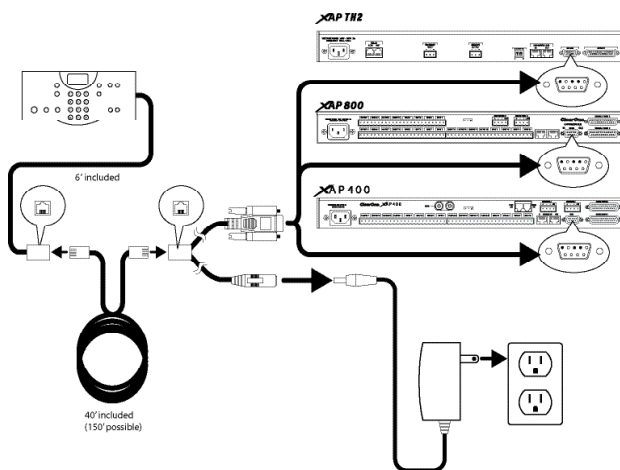
- + Offers full audio conference dialing functions and basic room audio control out of the box
- + Also offers five user-definable keys to manage the most commonly-used audio and presentation control functions, such as lights on/off, projector on/off, and screen up/ down.

### Attractive, Functional Design

- + Sleek design fits perfectly on any boardroom table
- + Weighted base gives controller substantial feel
- + Pre-printed labels with common presentation, audio conference, and room control functions apply easily to user-definable keys

## > COMPONENTS

**TABLETOP CONTROLLER**  
Wired controller connects directly to serial port of Converge Pro 880, 840T, 8i, TH20, XAP 800, XAP 400, or XAP TH2, along with power source, using included Y-cable



**CONTROLLER BUILDER SOFTWARE**  
Intuitive interface allows for simple configuration of user-definable keys--execute presets and macros on XAP or control third-party devices connected to XAP

## > SPECIFICATIONS



### **Tactical Keypad**

Dial Pad: 12 total buttons  
Volume Controls: Up, Down  
Call Functions: On/Off, Flash, Redial, Mute  
User-defined Keys: 5 buttons

### **LCD**

Display Type: 3-line 16-character matrix  
Backlight: No

### **Microprocessor**

Internal Memory  
Serial Interface to other subassemblies  
Master Reset

### **Connector**

Tethered female RJ-11 female connector

### **Interface Cabling**

Cable Type: CAT 3, CAT 5, or CAT 6 cabling  
Cable Gauge: 24 gauge  
Maximum Distance: 150 feet between mixer and Tabletop Controller

### **Communications**

Type: DTE  
Physical: RS-232  
Baud Rate: Selectable (38.4 or 57.6K baud)  
Flow Control: None

### **Power Supply**

Primary Voltage: 100 to 240 VAC auto-sensing 50-60 Hz  
Secondary Voltage: 12 VDC  
Wattage: 5 watts  
Average Current: 100 milliamps  
Connection: Positive Center/Grounded Shield

### **Environmental**

Operating Temperature: 32 to 122 degrees F  
Humidity: 15 to 80%

### **Mechanical**

Dimensions (WxDxH): 10.5" x 4.5" x 2.75"  
Weight: 2.0 lb (.91 kg)

### **Part Number**

910-151-891 Tabletop Controller

## > CLEARONE LOCATIONS

**Headquarters:**  
**Salt Lake City, UT USA**  
5225 Wiley Post Way  
Suite 500  
Salt Lake City, UT 84116  
Tel: 801-975-7200  
Toll Free: 800-945-7730  
Fax: 801-977-0087  
sales@clearone.com

**Latin America**  
Tel: 801-974-3621  
global@clearone.com

**EMEA**  
Tel: 44 (0) 1189 036 053  
global@clearone.com

**APAC**  
Tel: 801-303-3388  
global@clearone.com