

HUAWEI TE30 Videoconferencing Endpoint

Quick Installation Guide

■ What's in the Box



HUAWEI TE30
videoconferencing endpoint



Power adapter



Power cable



L-shaped bracket, 1/4"-UNC
screw, and hook-and-loop
fastener



Accessorial integration cable



HDMI cable



Network cable



Remote control



Qualification Card




Warranty Card



Safety Precautions



Quick Start Guide

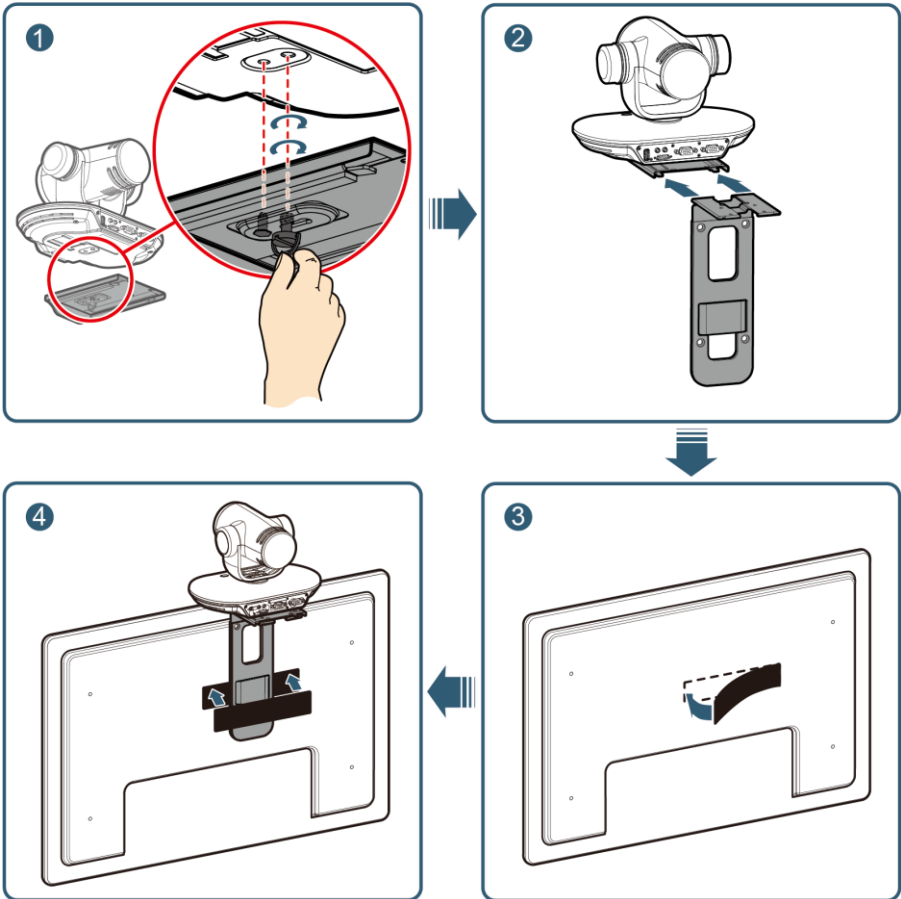
 The power adapter, power cable, and accessorial integration cable in the box can be used only with the endpoint in the same box. The item pictures are for your reference only.

■ Installation

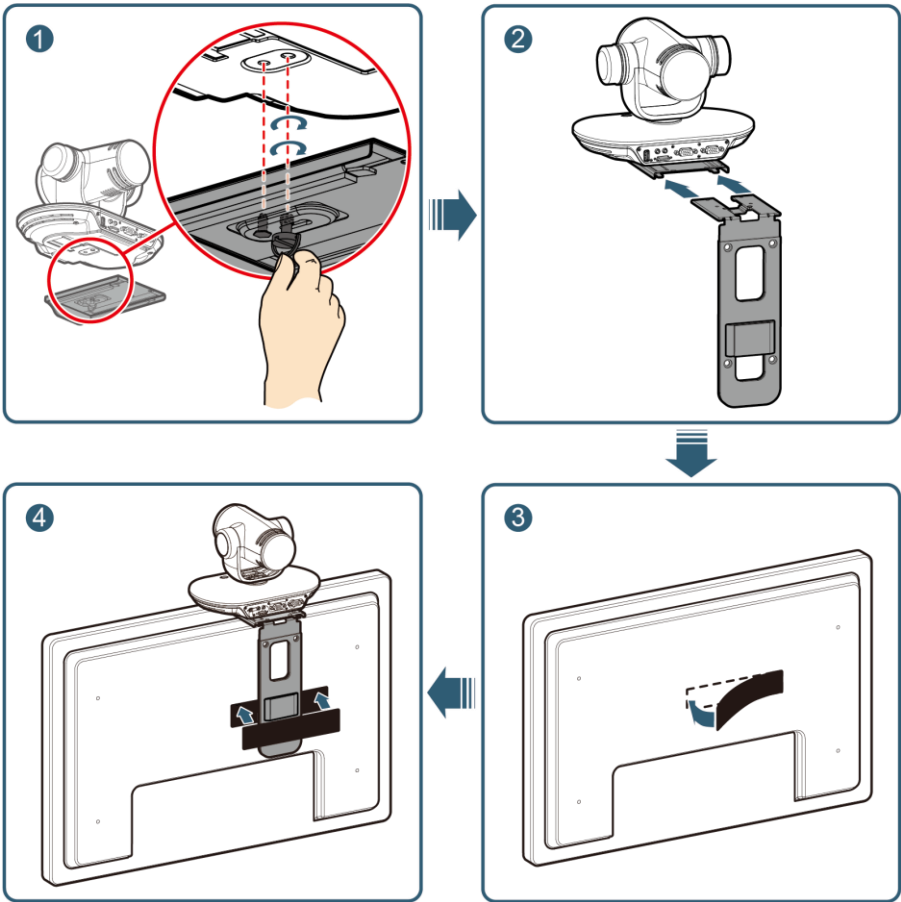
Standard Mounting

Use the L-shaped bracket and hook-and-loop fastener to secure the TE30 on top of the monitor. Select an installation option based on the monitor width.

- If the thickness of the monitor is 97 mm (3.82 in.) or slimmer, follow the steps in the following figure.



- If the thickness of the monitor is between 97 mm (3.82 in.) and 170 mm (6.69 in.), follow the steps in the following figure.



If the monitor is 170 mm (6.69 in.) or thicker or is wall-mounted, use the **free-standing**, **wall-mounting**, **inverted installation**, or **other installation options**.


Free-Standing

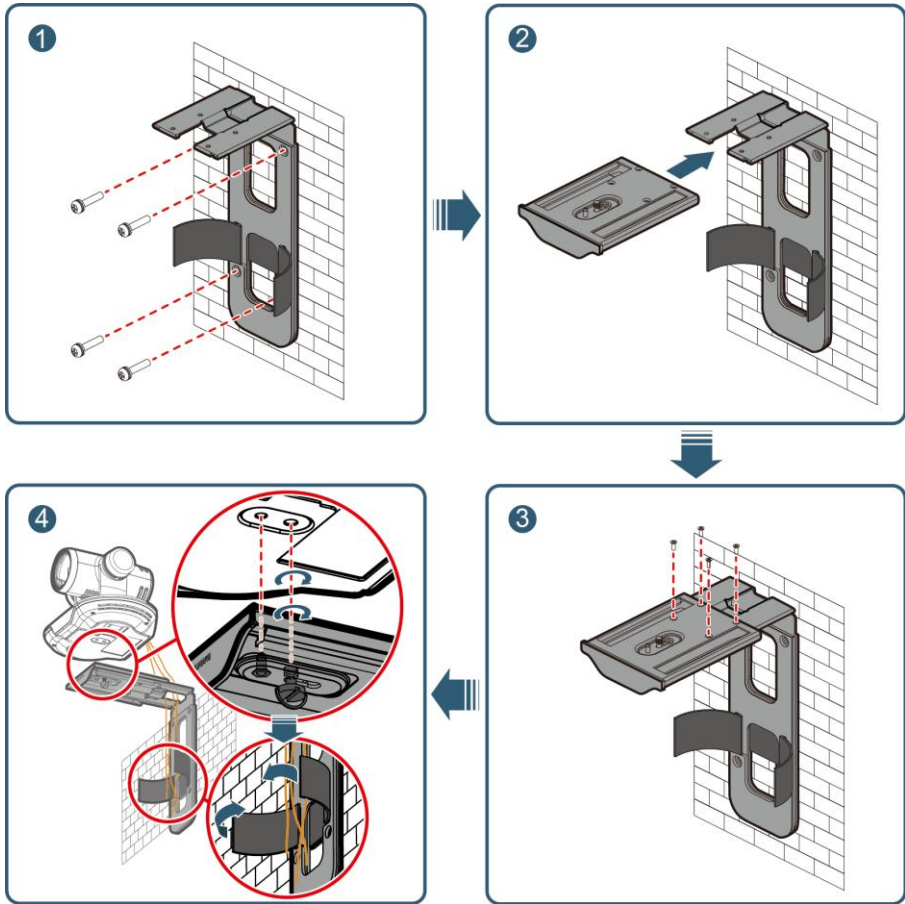
Place the TE30 on a flat surface.

If you have to place the TE30 on an inclined surface, ensure that the inclination is less than 15 ° so that the TE30 can function properly.

Wall-Mounted

Use the L-shaped bracket to wall-mount the TE30.

 Before mounting the TE30 onto the wall, connect all required cables to the TE30.



Inverted Installation

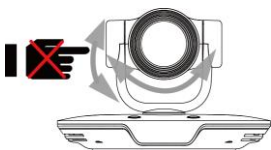
Purchase a bracket for inverted installation and mount the TE30 onto the ceiling.

Use the 1/4"-UNC screw to secure the TE30 to the bracket.

Other Installation Options

Purchase a tripod and install the TE30.

Indicator Status	TE30 Status	Indicator Status	TE30 Status
Blinking green	Starting	Steady orange	Powered off but connected to the power supply
Steady green	Operating properly	Off	Disconnected from the power supply
Blinking orange	Sleeping	Blinking red	Encountered a fault, such as a self-check error, overheating, and software malfunction



Do not turn the TE30 or stop it from turning using your hands or other forces when the TE30 is powered on and working properly.

■ Loading the Configuration File

● Using a USB Flash Drive

The TE30 automatically loads the configuration file from the USB flash drive. After the configuration file is loaded, the TE30 can work properly.

The USB flash drive and configuration file thereon are provided by the reseller or operator. Do not modify the configuration file. To obtain a USB flash drive, contact the local reseller or operator.

To load the configuration file on the USB flash drive:

1. Insert the USB flash drive into the USB port in the TE30.

2. When Popup prompts, click **Yes**.

The TE30 automatically loads the configuration file and restarts.



If you do not perform any operations within 10 seconds after you insert a USB flash drive, the TE30 automatically loads the configuration file and restarts.

3. Remove the USB flash drive.

● Using Other Methods

You can also use the methods described in the "Configuring the TE30" section in the *HUAWEI TE30 Videoconferencing Endpoint Quick Start Guide*.